

Introduction

This Quick Start gives you all the necessary information to quickly configure and start using the Cyclades-TS as a Console Access Server (CAS). You can configure the Cyclades-TS by any one of four methods: console, browser, telnet, or CLI (Command Line Interface). CLI allows you to configure certain parameters for a specified serial port or some network-related parameters. Specifics of this method are discussed under the appropriate option title in Chapter 3 of the User Guide.

If you have a serial port that you can use as a console port, use the Console method. If you have access to telnet, you can use this method, while New Users may prefer the Browser method for its user-friendliness.

The Cyclades-TS User Guide contains the complete version of this process in Chapter 2.

Configuration using a Console

Step 1: Connect the console cable.

Connect the console cable (created from the RJ-45 straight-through cable and the appropriate adapter) to the port labeled "Console" on the Cyclades-TS with the RJ-45 connector end, and to your PC's available COM port with the serial port end.

Step 2: Power on the Cyclades-TS.

After the TS finishes booting, you will see a login prompt on the console screen.

Step 3: Enter *root* as login name and *tslinux* as password.

Step 4: Type *wiz* and press Enter.

A configuration screen will appear, asking you a series of questions.

```
*****  
**C O N F I G U R A T I O N   W I Z A R D**  
*****
```

INSTRUCTIONS for using the Wizard:

You can:

- 1) Enter the appropriate information for your system and press ENTER or
- 2) Press ENTER if you are satisfied with the value within the brackets [] and want to go on to the next parameter or
- 3) Press ESC if you want to exit.

NOTE: For some parameters, if there is nothing within the brackets, it will continue to ask for a value. In that case, you must enter a valid value or # if you do not wish to configure the value.

Press ENTER to continue...

After you input the requested parameters you will receive a confirmation screen (the configuration below is only an example):

Current configuration:

Hostname : CAS

DHCP : enabled

Domain name : cyclades.com

Primary DNS Server : 197.168.160.200

Gateway : 192.168.160.1

After you confirm and save the basic parameters, you will be presented with the shell prompt. From there, either select to continue configuration using the vi editor, or use the browser or CLI method (if appropriate). The Cyclades-TS is now configured as a CAS with its new IP address, with no authentication, and accepting telnet to the serial ports.

You can telnet the CAS IP + serial port 1 with the following command:

```
telnet <IP assigned> 7001
```



Note: Serial port 1 is configured as 9600, 8N1. The server connected to this serial port has to have the same configuration for its serial port.

To explore the Cyclades-TS features, either continue configuration using your vi editor from the console, use your Web browser, or use CLI, if appropriate.

Configuration using a Web browser

The Cyclades-TS box comes with DHCP client enabled. If you have a DHCP Server installed in your LAN, you can skip Step 2 below. If not, the DHCP request will fail and an IP address pre-configured on the Console Server's Ethernet interface (192.168.160.10) will be used instead. To access the box using your browser:

Step 1: Connect Hub to workstation and TS.

Your workstation and your TS must be on the same physical LAN. Connect one RJ-45 cable from the Ethernet port of the TS to a spare port from a hub, and another cable from another spare port of that same hub to the workstation used to manage the servers.

Step 2: If you do not have a DHCP Server in your LAN, add a route pointing to the TS IP.

From the workstation, issue a command to add a route pointing to the network IP address of the TS (192.168.160.0) accessed through the workstation's Ethernet interface. (Note: Each of the following command lines are actually a single line.)

```
route add -net 192.168.160.0/24 gw
<IP address assigned to the worksta-
tion's Ethernet interface>
```

Example: If the workstation has an IP address of 200.246.93.150 the command would be:

```
route add -net 192.168.160.0/24 gw
200.246.93.150
```

For Windows, the command would be:

```
route add 192.168.160.0 mask
255.255.255.0 <IP address assigned
to the workstation's Ethernet inter-
face>
```

Example: If the workstation has an IP address of 200.246.93.150 the command would be:

```
route add 192.168.160.0 mask
255.255.255.0 200.246.93.150
```

Step 3: Point your browser to the IP address assigned by the DHCP Server (or to 192.168.160.10 if there is no DHCP Server on your LAN).

The login page shown in the following figure will appear.

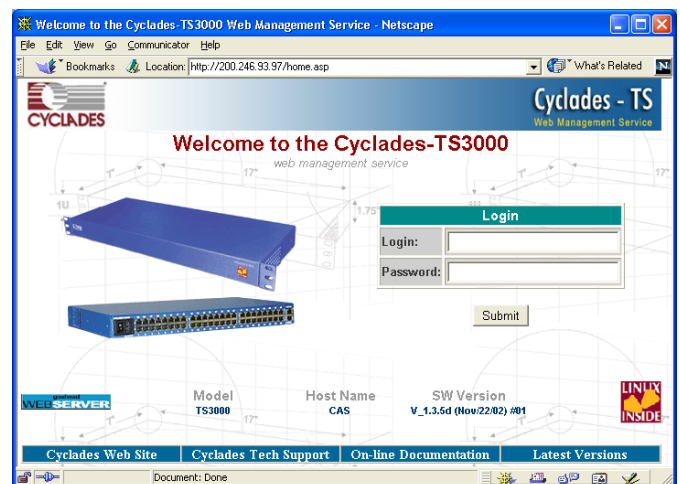


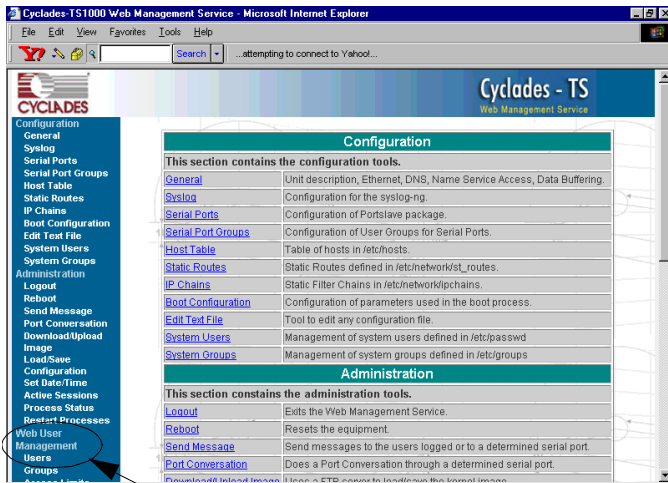
Figure 1: Login page of Web Configuration Manager

For Linux/UNIX, the command would be:

Step 4: Enter *root* as login name and *tslinux* as password.

Step 5: Click the Submit button.

After clicking the Submit button on the login page you will see the Configuration & Administration Menu page, shown in the following figure.



Link for changing password

Figure 2: Configuration & Administration Menu page

This page gives a brief description of all menu options. A menu of links is to the left side of the page.

Step 6: Click on the General link.

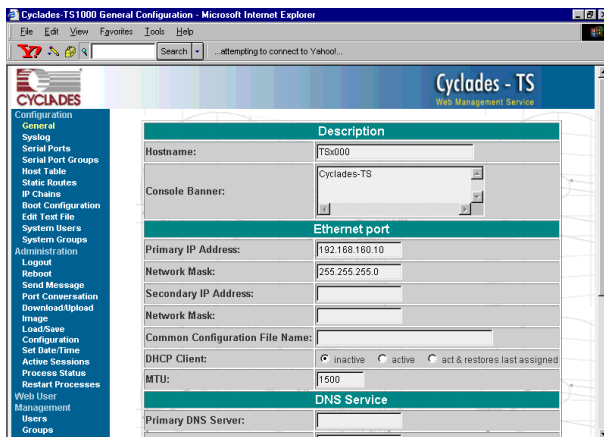


Figure 3: General page

Step 7: Configure parameters presented in the fields.

Step 8: Click on the Submit button.

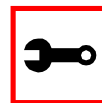
Step 9: Make the changes effective.

Click on the Administration > Run Configuration link, check the Serial Ports/Ethernet/Static Routes box and click on the Active Configuration. If you disabled DHCP and changed your Ethernet IP, you will lose your connection. You will need to use your browser to connect to the new IP.

Step 10: Click the Save Configuration to Flash button.

The configuration was saved in flash. The new configuration will be valid and running. The Cyclades-TS is now configured as a CAS with its assigned IP address, with no authentication, and accepting telnet to the serial ports. You can telnet the CAS IP + serial port 1 with the following command:

```
telnet <IP assigned> 7001
```



Note: Serial port 1 is configured as 9600, 8N1. The server connected to this serial port has to have the same configuration for its serial port.

To explore the Cyclades-TS features, either continue configuration using your browser, use the vi editor from the console, or use CLI, if appropriate.

Configuration using Telnet

The Cyclades-TS box comes with DHCP client enabled. If you have a DHCP Server installed in your LAN, you can skip Step 2 below. If not, the DHCP request will fail and an IP address pre-configured on the Console server's Ethernet interface (192.168.160.10) will be used instead. To access the box using telnet:

Step 1: Connect Hub to workstation and TS.

Your workstation and your TS must be on the same physical LAN. Connect one RJ-45 cable from the Ethernet port of the TS to a spare port from a hub, and another cable from another spare port of that same hub to the workstation used to manage the servers.

Step 2: If you do not have a DHCP Server in your LAN, add a route pointing to the TS IP.

From the workstation issue a command to add a route pointing to the network IP address of the TS (192.168.160.0) accessed through the workstation's Ethernet interface. (See Step 2 of [Configuration using a Web browser](#) for the commands.)

Step 3: Telnet to <IP assigned by DHCP Server or 192.168.160.10 if there is no DHCP Server>.

Step 4: Enter *root* as login name and *tslinux* as password.

Step 5: Type *wiz* and press Enter.

A configuration screen will appear, asking you a series of questions.

```
*****
**C O N F I G U R A T I O N   W I Z A R D**
*****
```

INSTRUCTIONS for using the Wizard:

You can:

- 1) Enter the appropriate information for your system and press ENTER or
- 2) Press ENTER if you are satisfied with the value within the brackets [] and want to go on to the next parameter or
- 3) Press ESC if you want to exit.

NOTE: For some parameters, if there is nothing within the brackets, it will continue to ask for a value. In that case,

you must enter a valid value or # if you do not wish to configure the value.

Press ENTER to continue...

After you input the requested parameters you will receive a confirmation screen (the configuration below is only an example):

Current configuration:

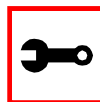
```
Hostname : CAS
DHCP : disabled
System IP : 192.168.160.10
Domain name : cyclades.com
Primary DNS Server : 197.168.160.200
Gateway : 192.168.160.1
Network Mask : 255.255.255.0
```

At this point you may lose your connection when saving the changes, if you disabled DHCP and assigned an IP address. *Don't worry!* The new configuration will be valid. The Cyclades-TS is now configured as a CAS with its assigned (by DHCP or you) IP address, with no authentication, and accepting telnet to the serial ports. You can telnet the CAS IP + serial port 1 with the following command:

```
telnet <IP assigned> 7001
```

See note box on page 3.

After you confirm the basic parameters, you will be presented with the shell prompt. Additional product features may now be explored and configured by vi (from the console), Web or CLI (if appropriate)



Note: For the TS100, it is necessary to comment the line referring to getty and uncomment the line referring to cy_buffering, run saveconf and reboot the unit in order to have the CAS profile active.