

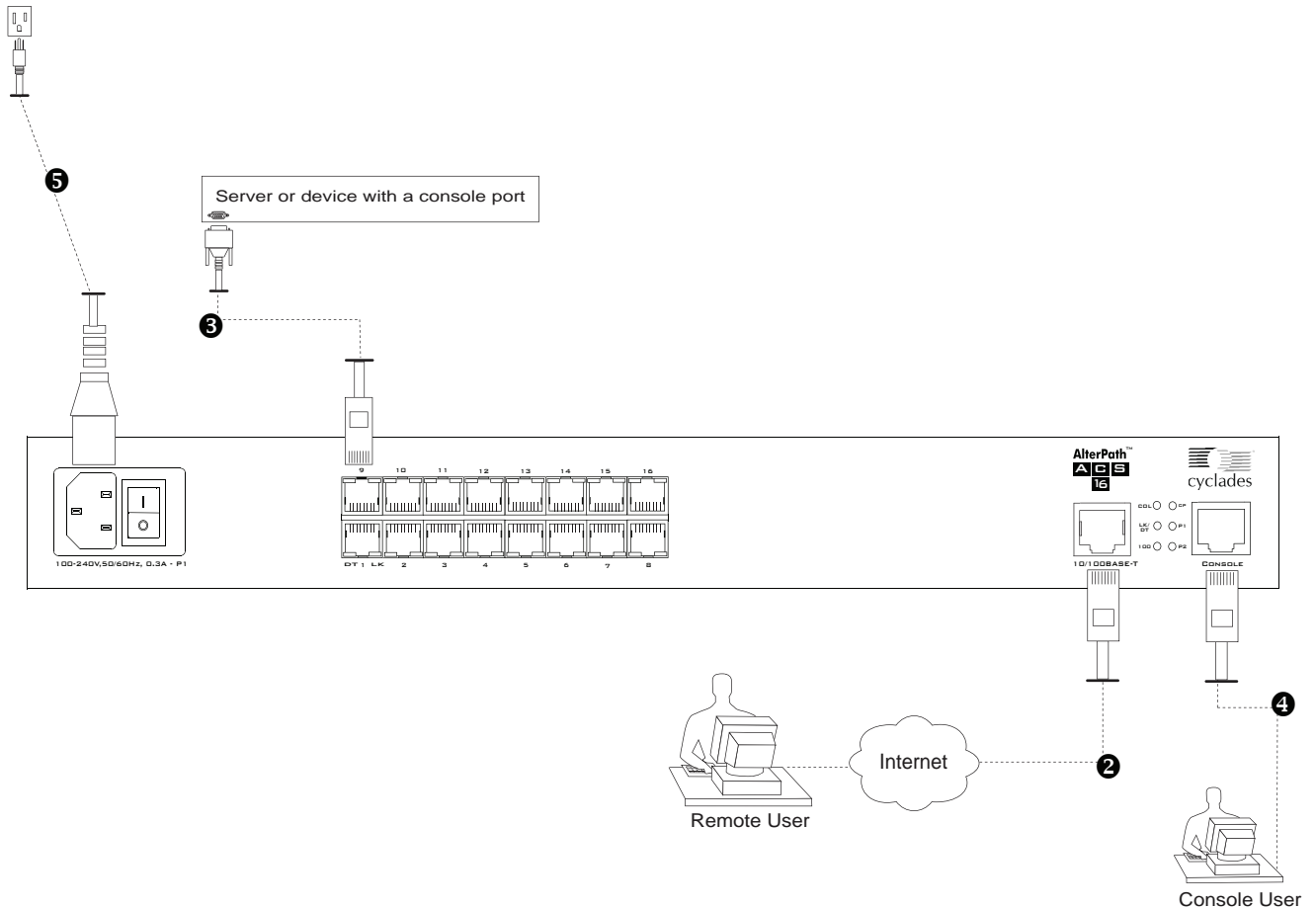


cyclades AlterPath™ ACS Quick Start Guide

This Quick Start Guide describes the AlterPath™ ACS basic installation tasks. The following table lists the tasks in the order they should be performed.

1.	Mount the AlterPath ACS.	Page 2
2.	Make an Ethernet Connection.	Page 2
3.	Connect Servers or Devices.	Page 2
4.	Make a Direct Connection for Network Configuration.	Page 3
5.	Power On the ACS and the Connected Servers or Devices.	Page 3
6.	Perform Basic Network Configuration.	Page 3
7.	Select a Security Profile	Page 6
8.	Add Users and Configure Ports Using the Web Manager.	Page 7

The following illustration shows the basic connections corresponding to the above table.



For more details on installing the ACS and for additional procedures, see Chapter 2, Installation and Configuration in the *AlterPath ACS Installation, Administration, and User's Guide* at the following locations:

- On the documentation CD shipped with the product
- At <http://www.cyclades.com/docs>.

1. Mount the AlterPath ACS

You can place the ACS on a desktop or a shelf, or rack-mount the unit using the two brackets supplied with screws.

▼ *To Mount the ACS*

1. Install the brackets on to the front or back edges of the box using a screw driver and the screws provided with the mounting kit.



2. Mount the ACS in a rack.

2. Make an Ethernet Connection

Connect a CAT-5 patch cable from the ACS port labeled 10/100Base-T to an Ethernet hub or switch.

3. Connect Servers or Devices

The procedure in this section describes connecting a server or a device that has a console port to the ACS's serial port.

▼ *To Connect Servers or Devices to the Serial Ports*

Using CAT-5 patch cables and DB9 or DB25 console adapters assemble crossover cables to connect devices to the ACS's serial ports.

Note: The AlterPath ACS16 and ACS32 **DC-powered** models are NEBS Level 3 certified. Use shielded cables when connecting devices to the console and the serial ports of DC-powered ACS16 and ACS32 to comply with NEBS certification requirements.

4. Make a Direct Connection for Network Configuration

To prepare to perform the basic network configuration, make a direct connection to ACS by connecting a terminal or computer to the console port.

▼ **To Connect to the Console Port**

1. Assemble a console cable using a CAT-5 patch cable and the appropriate console adapter supplied with ACS.

Note: Supplied DB25 and DB9 console adapters have an RJ-45 connector on one end.

2. Connect the RJ-45 connector to the port labeled “Console” on the ACS, and connect the adapter-end to the COM port of the terminal or the computer.
3. Install and launch your serial communication software on a terminal or computer. For example, Hyperterminal, Kermit, or Minicom.
4. Select an available COM port.
5. Using the terminal or a terminal emulation program start a session with the following console parameters:
 - Serial Speed: 9600
 - Data length: 8 bits
 - Parity: None
 - Stop bit: 1
 - Flow control: None

5. Power On the ACS and the Connected Devices

1. Make sure the power switch is off before plugging in the power cable and turning on the power switch(es).

Note: If your ACS model is equipped with dual power supplies, make sure you turn both power switches on. After system initialization, a beep sound will warn if one of the power supplies is off.

2. Turn on the power switches of the connected servers and devices.

6. Perform Basic Network Configuration

Once the hardware connection is made and the system initializes, the ACS login prompt appears in the terminal window.

▼ To Log into ACS through the Console

1. From your terminal or terminal emulation application, log into the console port as root.

```
AlterPath ACS

CAS login: root
Password:  tslinux
```

Warning: For security reasons, it is strongly recommended that you change the default password “**tslinux**” as soon as possible. To change the default password, enter the “passwd” command at the prompt, and enter a new password when prompted.

Note: The following Security Advisory appears the first time ACS is accessed, or after a reset to factory default parameters. If you are upgrading the firmware on ACS, the previously configured security parameters are retained in the flash memory and the below message does not appear.

Important - Security Advisory!

Console Management provides critical access to management features of attached equipment. Please take the required precautions to understand the potential impacts this device may have to your SECURITY policies.

From factory, this device is configured as follows:

- Single password for ROOT;
- All serial port DISABLED;
- DHCP, Telnet, SSHv1 & SSHv2, and HTTP & HTTPS enabled.

Cyclades STRONGLY recommends:

1. To change the ROOT password before setting up the box for secure access to the ACS equipment.
2. That you SELECT A SECURITY PROFILE to complete the INITIAL SETUP. Security is dependent on Policy and is Configurable to fit in environments with varying levels of Security. Cyclades provides three pre-set Security Levels: SECURED, MODERATE and OPEN, and in addition, the ability to set a CUSTOM Security Profile.
3. Do not leave the equipment idle WITHOUT selecting a SECURITY PROFILE.
4. To ENABLE Serial Ports and CONFIGURE them using Web UI or CLI. Refer to the Quick Start Guide or the User's Guide for Security Profile selection details and Serial Port configuration.

▼ To Use the `wiz` Command to Configure Network Parameters

1. Launch the Configuration Wizard by entering the `wiz` command.

```
[root@CAS root]# wiz
```

2. At the prompt, enter `n` to change the defaults.

```
Set to defaults (y/n) [n] : n
```

3. Press Enter to accept the default hostname, otherwise enter your own hostname.

```
Hostname [CAS] : boston_branch_ACS
```

4. Press Enter to keep DHCP enabled. By default, ACS uses the IP address provided by the DHCP server. If your network does not use DHCP, then ACS will default to 192.168.160.10.

```
Do you want to use DHCP to automatically assign an IP  
for your system? (y/n) [y] :
```

5. To change the default static IP address, see your network administrator to obtain a valid IP address.

```
System IP [192.168.160.10] : ACS_IP_address
```

6. Enter the domain name.

```
Domain name [cyclades.com] : domain_name
```

7. Enter the IP address for the Primary DNS (domain name) server.

```
Primary DNS Server [192.168.44.21] : DNS_server_IP_address
```

8. Enter the IP address for the gateway.

```
Gateway IP [eth0] : gateway_IP_address
```

9. Enter the netmask for the subnetwork.

```
Network Mask [#] : netmask
```

The network configuration parameters appears.

10. Enter `y` after the prompts shown in the following screen example.

```
Are all these parameters correct? (y/n) [n] : y  
Do you want to activate your configurations now? (y/n) [y] : y  
Do you want to save your configuration to Flash? (y/n) [n] : y
```

11. To confirm the configuration, enter the `ifconfig` command.
12. Log out and use the Web Manager to select a security profile, add users, and configure access to the serial ports.

After the basic network configuration is completed through the terminal, configure a security profile using the Web Manager as described in the following section.

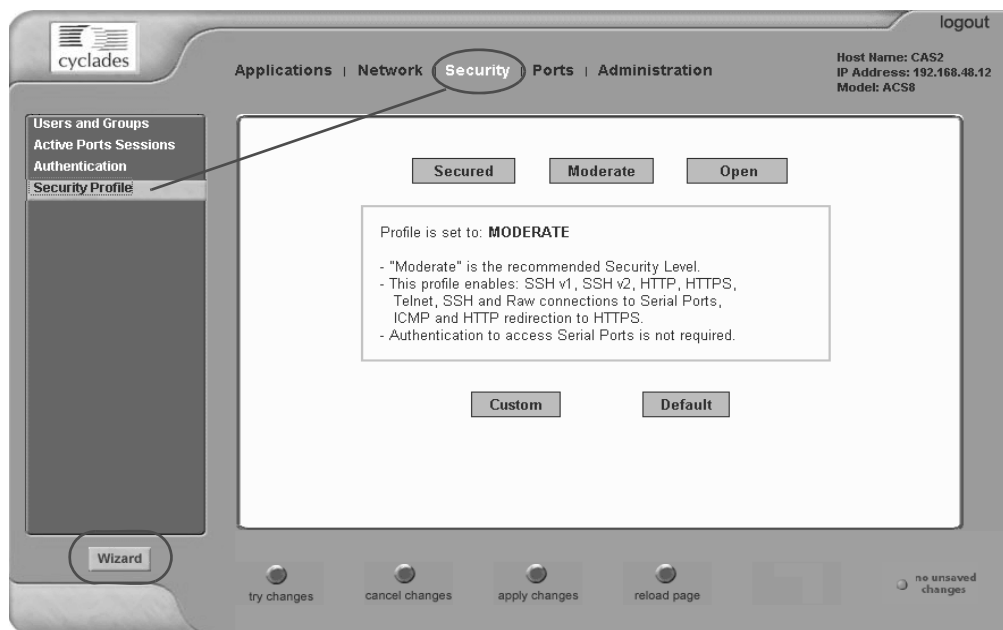
7. Select a Security Profile

Connect to the Web Manager by entering the IP address of the ACS in your browser's window.

Note: A Security Profile must be selected before proceeding further in configuring ACS.

▼ To Select a Security Profile

1. From the main menu select Security > Security Profile, or click on the **Wizard** button and select **Step 1: Security Profile**.



2. Select a pre-defined Security Profile, or define a Custom profile for specific services. The available profile options are:
 - **Secure:** Disables all protocols except SSHv2, HTTPS, and SSH to Serial Ports.
 - **Moderate:** Enables SSHv1, SSHv2, HTTP, HTTPS, Telnet, SSH and Raw connections to Serial Ports, ICMP, and HTTP redirection to HTTPS.
 - **Open:** Enables all services, Telnet, SSHv1, SSHv2, HTTP, HTTPS, SNMP, RPC, ICMP and Telnet, SSH and Raw connections to Serial Ports.
 - **Default:** Sets the profile to the same configuration as Moderate profile
 - **Custom:** Allows custom configuration of individual protocols and services such as SSHv1, SSHv2, HTTP, HTTPS, etc.

For detailed information on Security Profiles refer to Chapter 9, “Security Profiles” in the *AlterPath ACS Installation, Administration, and User’s Guide*.

8. Add Users and Configure Ports Using the Web Manager

Note: AlterPath ACS is configured from the factory with all Serial Ports disabled.

- The administrator can add users, enable or disable ports, select and assign specific users to individual ports. For detailed information on managing users and ports on ACS refer to *AlterPath ACS Installation, Administration, and User’s Guide*.
- For additional configuration and administration options, and other important related information, see *AlterPath ACS Installation, Administration, and User’s Guide*, and the following chapters.

Topic	Where Documented
An Introduction to AlterPath ACS	Chapter 1, “Introduction”
Installation and Configuration Process	Chapter 2, “Installation and Configuration
For Regular Users - Using the Web Manager	Chapter 3, “Web Manager for Regular Users
For Administrators - Using the Web Manager	Chapter 4, “Web Manager for Administrators
Configuring the Web Manager Using the Wizard Mode	Chapter 5, “Configuring ACS in Wizard Mode

Cyclades Corporation

3541 Gateway Boulevard
Fremont, CA 94538 USA

1.888.CYCLADES (292.5233)

1.510.771.6100

1.510.771.6200 (fax)

<http://www.cyclades.com>

Part Number: PAC0199

Release Date: November 2005