

Quick Start

AlterPath Console Server - Version 2.1.0

Introduction

This Quick Start gives you all the necessary information to quickly configure and start using the AlterPath Console Server as a Console Access Server (CAS). You can configure the AlterPath Console Server by any one of four methods: console, browser, telnet, or CLI (Command Line Interface). CLI allows you to configure certain parameters for a specified serial port or some network-related parameters. Specifics of this method is discussed under the appropriate option title in Chapter 3 of the User Guide.

If you have a serial port that you can use as a console port, use the Console method. If you have access to telnet, you can use this method, while New Users may prefer the Browser method for its user-friendliness. The AlterPath Console Server User Guide contains the complete version of this process in Chapter 2. The convention (A)CS allows for both the ACS which has a dual power supply and a PCMCIA card, as well as the CS, which has a single power supply and no PCMCIA card.

Configuration using a Console

Step 1: Connect the console cable.

Connect the console cable (created from the RD-45 straight through cable and the appropriate adapter) to the port labeled "Console" on the AlterPath Console Server with the RJ-45 connector end, and to your PC's available COM port with the serial port end.

Step 2: Power on the AlterPath Console Server.

After the (A)CS finishes booting, you will see a login prompt on the console screen.

Step 3: Enter root as login name and tslinux as password.

Step 4: Type wiz and press Enter.

A wizard configuration screen will appear, asking you a series of questions.

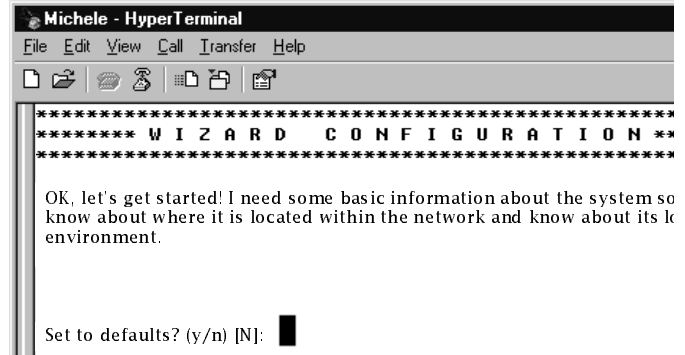


Figure 1: The initial wizard configuration screen

After you input the requested parameters you will receive a confirmation screen:

Your current configuration parameters are:

Hostname : CAS

System IP : 192.168.160.10

Domain name : cyclades.com

Primary DNS Server : 197.168.160.200

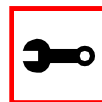
Gateway : 192.168.160.10

Network Mask : 255.255.255.0

After you confirm and save the basic parameters, you will be presented with the shell prompt. From there, either select to continue configuration using the vi editor, or use the browser or CLI method (if appropriate).

The AlterPath Console Server is now configured as a CAS with its new IP address, with no authentication, and accepting telnet to the serial ports. You can telnet the CAS IP + serial port 1 with the following command:

```
telnet <IP you assigned> 7001
```



Note: Serial port 1 is configured as 9600, 8N1. The server connected to this serial port has to have the same configuration for its serial port.

Quick Start

AlterPath Console Server - Version 2.1.0

To explore the AlterPath Console Server features, either continue configuration using the vi editor from the console, use a browser from a workstation and point to the AlterPath Console Server, or use CLI (if appropriate).

Configuration using a Web browser

The AlterPath Console Server box comes with an IP address pre-configured on its Ethernet interface (192.168.160.10). To access that box using your browser:

Step 1: Connect Hub to workstation and (A)CS.

Your workstation and your (A)CS must be on the same physical LAN. Connect one RJ-45 cable from the Ethernet port of the (A)CS to a spare port from a hub, and another cable from another spare port of that same hub to the workstation used to manage the servers.

Step 2: Add route pointing to the (A)CS IP.

From the workstation, issue a command to add a route pointing to the network IP address of the (A)CS (192.168.160.0) accessed through the workstation's Ethernet interface. (Note: each of the following command lines are actually a single line.)

For Linux/UNIX, the command would be:

```
route add -net 192.168.160.0/24 gw  
<IP address assigned to the worksta-  
tion's Ethernet interface>
```

Example: if the workstation has IP address 200.246.93.150 the command would be:

```
route add -net 192.168.160.0/24 gw  
200.246.93.150
```

For Windows, the command would be:

```
route add 192.168.160.0 mask  
255.255.255.0 <IP address assigned  
to the workstation's Ethernet inter-  
face>
```

Example: if the workstation has IP address 200.246.93.150 the command would be:

```
route add 192.168.160.0 mask  
255.255.255.0 200.246.93.150
```

Step 3: Point your browser to 192.168.160.10.

The login page shown in the following figure will appear.

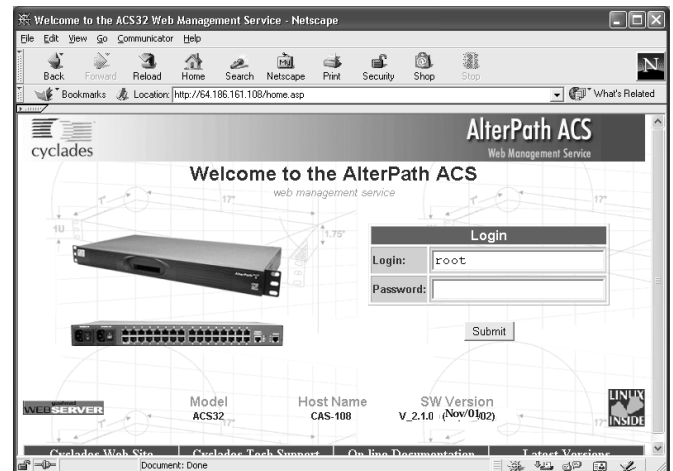


Figure 2: Login page of Web Configuration Manager

Step 4: Enter root as login name and linux as password.

Step 5: Click the Submit button.

After clicking the Submit button on the login page you will see the Configuration & Administration Menu page, shown in the following figure.

Quick Start

AlterPath Console Server - Version 2.1.0

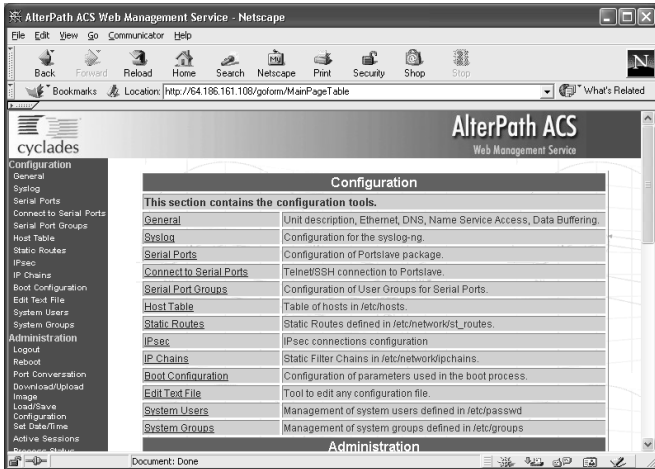


Figure 3: Configuration & Administration Menu page

This page gives a brief description of all menu options and allows you to change your password.

Step 6: Configure using the General page.

The General page of the Web Configuration Manager is shown in the following figure.

Step 7: Configure parameters presented in the fields.

A menu of links is to the left side of the page.

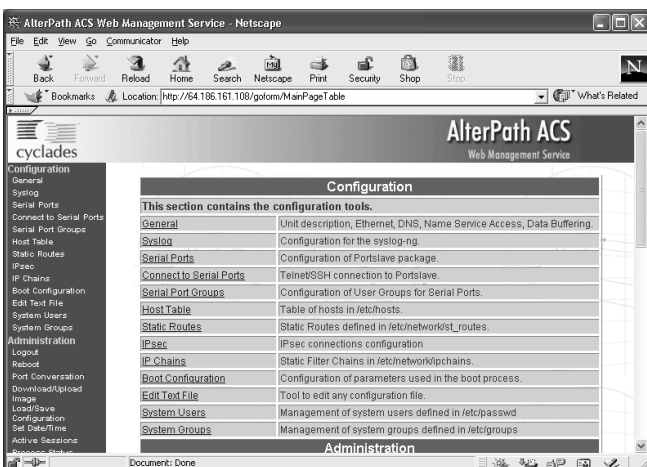


Figure 4: General Page

Step 8: Click on the link Web User Management > Load/Save Configuration.

Step 9: Click the Save Configuration button.

Step 10: Click on the link Administration > Load/Save Configuration.

Step 11: Click the Save Configuration to Flash button.

The configuration was saved in flash but it is not yet running.

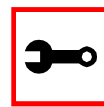
Step 12: Click on Administration > Restart Processes > Stop cy_ras.

Step 13: Click on Start cy_ras.

If you changed your ethernet IP, you will lose your connection. You will need to use your browser to connect to the new IP.

The new configuration will be valid and running. The AlterPath Console Server is now configured as a CAS with its new IP address, with no authentication, and accepting telnet to the serial ports. You can telnet the CAS IP + serial port 1 with the following command:

```
telnet <IP you assigned> 7001
```



Note: Serial port 1 is configured as 9600, 8N1. The server connected to this serial port has to have the same configuration for its serial port.

To explore the AlterPath Console Server features, either continue configuration using your browser, use the vi editor from the console, or use CLI (if appropriate).

Quick Start

AlterPath Console Server - Version 2.1.0

Configuration using Telnet

The AlterPath Console Server box comes with an IP address pre-configured on its Ethernet interface (192.168.160.10). To access that box using telnet:

Step 1: Connect Hub to workstation and (A)CS.

Your workstation and your (A)CS must be on the same physical LAN. Connect one RJ-45 cable from the Ethernet port of the (A)CS to a spare port from a hub, and another cable from another spare port of that same hub to the workstation used to manage the servers.

Step 2: Add route pointing to the (A)CS IP.

From the workstation issue a command to add a route pointing to the network IP address of the (A)CS (192.168.160.0) accessed through the workstation's Ethernet interface. (See Step 2 of [Configuration using a Web browser](#) for the commands.)

Step 3: Telnet to 192.168.160.10.

Step 4: Enter root as login name and tslinux as password.

Step 5: Type wiz and press Enter.

A wizard configuration screen will appear, asking you a series of questions.

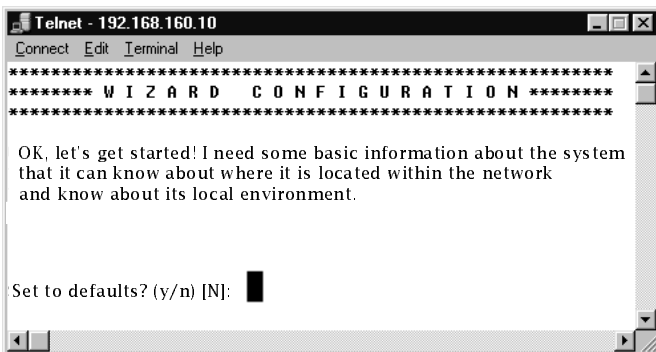


Figure 5: The initial wizard configuration screen

After you input the requested parameters you will receive a confirmation screen:

Your current configuration parameters are:

Hostname : CAS

System IP : 192.168.160.10

Domain name : cyclades.com

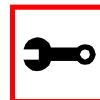
Primary DNS Server : 192.168.160.200

Gateway : 192.168.160.10

Network Mask : 255.255.255.0

At this point you may lose your connection. *Don't worry!* The new configuration will be valid. The AlterPath Console Server is now configured as a CAS with its new IP address, with no authentication, and accepting telnet to the serial ports. You can telnet the CAS IP + serial port 1 with the following command:

```
telnet <IP you assigned> 7001
```



Note: Serial port 1 is configured as 9600, 8N1. The server connected to this serial port has to have the same configuration for its serial port.

After you confirm and save the basic parameters, you will be presented with the shell prompt. From there, either select to continue configuration using the vi editor, continue using a browser, or use CLI (if appropriate).

To explore the AlterPath Console Server features, either continue configuration using the vi editor from the console, use a browser from a workstation and point to the AlterPath Console Server or use CLI (if appropriate).